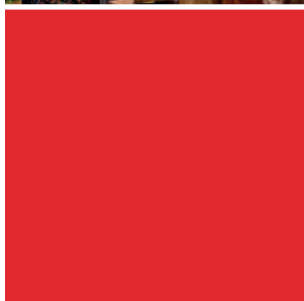


We support your business

NOVITUS  **online power**

mała
online



Cash register



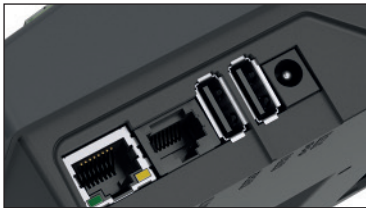

The MAŁA Online cash register offers excellent ergonomics and the highest quality of the components used, thus both beginners and long-term users of cash registers will find in it what can now be required from any modern cash register. If mobility is not your priority and you value classic designs, choose a mechanical high-pitch switch keyboard.

INTUITIVE OPERATION - A modern design and a proven full-size switch keyboard with quick sale buttons are a guarantee of comfortable and fast work. We focus on optimal work ergonomics, which is why both beginners and long-term users of cash registers will easily master the operation of this device. Like any cash register from the Online Power family, it seamlessly connects to peripheral devices and the payment terminal. The cash register is equipped with two modern graphic displays with an innovative design.

PRINTING MECHANISM - Thanks to the easy loading Fujitsu printing mechanism, paper change is very quick and easy. The 57 mm wide paper allows you to print clear receipts with attractive graphics.

MULTIPLE PORTS AND CONNECTORS - The cash register communicates with the computer via a traditional USB and RS232 or modern LAN network port. Additionally, the cash register can be equipped with the following modules: WLAN, BT and GSM modem. You can separate communications with CRK to a separate channel, using the other channels in parallel for other purposes.

COMMUNICATION WITH CRK - Thanks to electronic transmission, receipts are systematically sent to CRK and the user does not have to worry about storing them. Access to the saved data is very simple - the user has constant access to the memory module protected by the application and can read it freely.

Online		
Communication with Centralne Repozytorium Kas	yes, LAN	
Parameters		
Number of products	20 000	
Number of PTU rates	7	
Number of cashiers	32	
Product name	40 characters	
Euro currency support	yes (multi-currency)	
Printing Mechanism		
Type	thermal, clamshell type	
Paper width • roller length	57 mm • 30 m	
Keyboard		
Type	alphanumeric	
Number of buttons	19	
Displays		
Client	graphic LCD, illuminated, 192x48 pixels	
Cashier	graphic LCD, illuminated, 192x48 pixels	
Interfaces		
Communication connection	1 x LAN, 1 x RS232, 3 x USB	
Cooperation with devices	computer, computer network elements, cash drawer, EFT terminal	
Cash drawer control	yes (active)	
Power supply		
External	External power supply 230 V / 12 V; 2 A	
Internal	Built-in gel battery 6 V; 3 Ah	
Dimensions		
Width/height/depth	194 x 105 x 215 mm	
Weight	1,5 kg	

