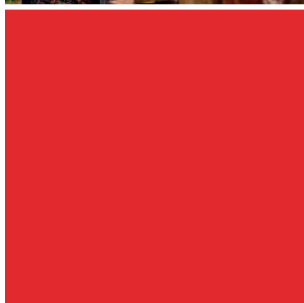


We support **your business**

**NOVITUS**  **online power**

# LINK online



## ONLINE CASH REGISTER

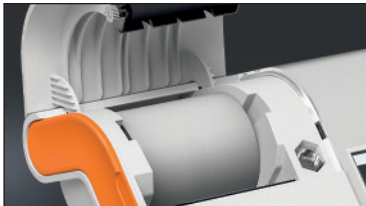

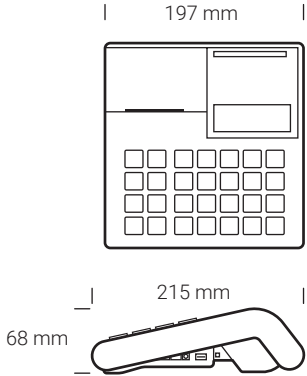
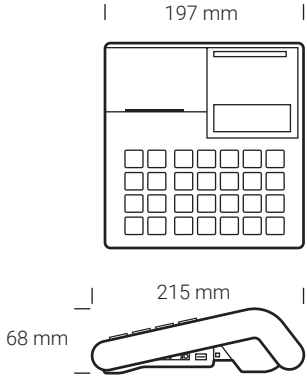
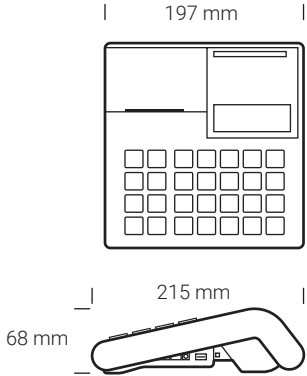
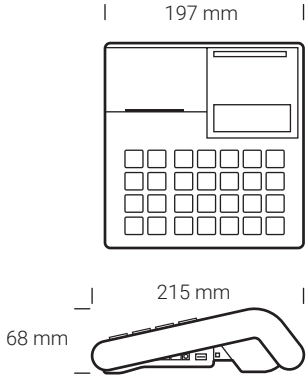
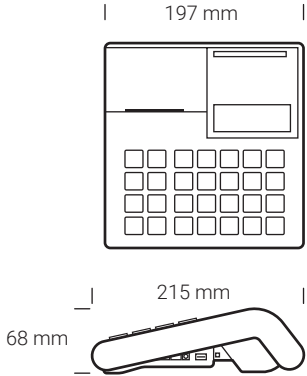


**UNIQUE DESIGN** – LINK is another model of the Novitus Online Power family. It combines demanding technical specifications and advanced features in a modern form. The large, legible keyboard is built in a slim, compact housing for a sleek look and excellent ergonomics. Its user will enjoy all the benefits of a new LINUX-based hardware platform, providing outstanding computing power and solutions that deliver the highest levels of data security. The compact and handy cash register housing hides the functionality previously seen in the large system cash register segment. With a very large product base, precise product naming, on-line communication with a PC, multiple communication connections including LAN, RS232 and USB, you can create an advanced sales system even for a medium-sized store. With the use of the cloud-based NoviCloud system, the user of the cash register can access everything that happens on the device also on any web browser or in a dedicated mobile application.

**LARGE KEYBOARD** – A very convenient keyboard with large keys makes operation of the cash register much easier – it is a pleasure to use it! Eight function keys that can be programmed on two levels enable you to create shortcuts to any cash register menu item or any of its functions, and to quickly sell goods with a wide range of additional options. In addition, the keyboard design makes it resistant to accidental spills.

**NOT ONLY FISCAL RECEIPTS** – LINK Online allows you to print a logo in the header and a graphic in the footer of your receipt. You can choose whether to print the logo on each print or on fiscal receipts only. Include your logo in graphic form, contact information, or online store address on each receipt. Using the cash register, you can also directly print items such as: tickets, discount vouchers, information on promotions, returnable packages receipts, occasional returns. You can also create your own print format.

**COMMUNICATION with CRK** – The cash register allows the connection and transfer of data to the Central Cash Register Repository (CRK) via the IT network. The cash register can communicate with the Central Cash Register Repository and the external sales program over a standard computer network via a built-in LAN connector or, for example, a WiFi or GSM module attached to the USB port.

|                             |   |   |
|-----------------------------|---|---|
| <b>Data parameters</b>      |   |    |
| Number of products          | 20 000  |   |
| Number of VAT rate          | 7   |  |
| Number of cashiers          | 32  |   |
| Product name                | 40 characters + 3 lines of 40 characters of description each  |   |
| <b>Printer mechanism</b>    |   |   |
| Kind • Type                 | Easy loading • FUJITSU FTP 628  |  |
| Paper width • roller length | 57 mm • up to 30 lm   |   |
| <b>Keyboard</b>             |   |   |
| Type                        | alphanumeric, switch  |   |
| Number of keys              | 20 + 8 functional / quick sales buttons   |  |
| <b>Display</b>              |   |   |
| Customer                    | graphic, illuminated, black and white, LCD, 192 x 48 pixels   |   |
| Cashier                     | graphic, illuminated, black and white, LCD, 192 x 64 pixels   |   |
| <b>Interfaces</b>           |   |  |
| Communication connection    | 1 x RS232, 2 x USB-A host, 1 x USB-A host/device, 1 x LAN (Ethernet)  |   |
| Cooperation with devices    | CRK, computer, barcode reader (scanner), electronic scale, payment terminal (EFT), programmable PIN pad (EFT), order printer, monitoring (print monitor), USB keyboard, flash drive |   |
| Cash drawer control         | passive, 6-24 V   |   |
| <b>Power supply</b>         |   |  |
| External                    | External power supply 230 V / 12 V; 2 A   |   |
| Internal                    | Built-in gel battery 6 V; 1.3 Ah  |  |
| <b>Dimensions</b>           |   |   |
| Width/Height/Depth          | 195 / 68 / 215 mm   |   |
| Weight                      | 1 kg  |   |